

CT DEEP **2017**
FISHING REPORT NUMBER 24
9/21/2017



Striped Bass (*Morone saxatilis*)



YOU CAN FIND US DIRECTLY ON FACEBOOK. This page features a variety of information on fishing, hunting, and wildlife watching in Connecticut. The address is www.facebook.com/CTFishandWildlife.

SHARE THE EXPERIENCE
Take someone fishing

INLAND REPORT

Fall TROUT Stocking- Trout stocking has been on hold due to warm temperatures (air and water). As soon as conditions improve we will be stocking. Stay up to date with our daily stocking post on [Facebook](#), our [interactive trout stocking map](#), and our [stocking report](#).

LARGEMOUTH BASS fishing is reported as very good. Places where the largemouth are eager to bite include West Hill Pond, East Twin Lake, Gardner Lake, Pickerel Lake, Beseck Lake, Amos Lake, Beach Pond, Highland Lake, Seymour Reservoir #4, Crystal Lake, Mudge Pond, West Side Pond, Tyler Lake, Mansfield Hollow Reservoir, Dog Pond, Hatch Pond, Park Pond, Lake Wononskopomuc, Lake Saltonstall, Bishop Swamp, Winchester Lake, Congamond Lakes, Quinebaug Lake, Black Pond (Meriden), Burr Pond, Griggs Pond, Anderson Pond, Billings Lake, Moodus Reservoir, Aspinook Pond, Babcock Pond, Pachaug Pond, Lake Hayward, Quonnipaug Lake, Rogers Lake and Stillwater Pond.

Tournament angler reports are from Amos Lake (slow, 3.32 lb lunger), Beach Pond (slow to fair, no size with only a 1.5 lb lunger), Gardner Lake (fair to good, mostly 1 lb fish with a 2.75 lb lunger for one club, but better weights for a second club and a 3.89 lb lunger), Long Pond (slow to fair, 5.13 lb lunger), Pachaug Pond ("...the bite was on..." good results, with a .88 lb lunger and 3 more fish over 4 lbs), Bantam Lake (fair fishing, 4.6 lb and 3.65 lb lunkers), Candlewood Lake (tough for many, but good for some, 6.75 lb and 5.06 lb lunkers), Highland Lake (fair, 4 lb, 2.76 lb and 2.73 lb lunkers), and Lake Lillinonah (slow, 5.06 lb lunger).

SMALLMOUTH BASS. Catches reported from Candlewood Lake, Housatonic River (Upper), Naugatuck River, Lake McDonough, Lake Zoar and Lake Lillinonah. Housatonic River smallmouth fishing has been good.

Tournament angler reports are from Bantam Lake (some action, 3.93 lb lunger), Pachaug Pond (some caught), Candlewood Lake (slow to fair, 4.2 lb lunger for one club with smallies averaging 2.5 lbs apiece), and Lake Lillinonah (fair action).

CARP are active. Productive fishing is in Batterson Park Pond, Lake Zoar, CT River, and Aspinook Pond.

KOKANEE SALMON are slow, with a few reports, fish are beginning to transition to spawning mode (West Hill Pond is being lowered for a dam repair).

Connecticut Hunting & Fishing Day
Saturday September 23 10AM to 4PM

- Hunting & Trapping Tips
- Fishing & Boating Displays
- Archery Shooting
- Fly-tying and Casting
- Hunting & Fishing Clubs
- Conservation Organizations
- Birds of Prey
- Kid's Activities
- Fish & Wildlife Exhibits
- Equipment Vendors
- Laser shot, Dart gun, Blow pipe
- BB Gun Shooting Range
- Hunting Dog Demonstrations

- NEW LOCATION -
In association with **Cabela's** Admission and all activities are **FREE!**
475 East Hartford Blvd N.
East Hartford, CT
Connecticut Department of Energy and Environmental Protection
www.ct.gov/deep/HuntFishDay
860-424-3011; deep.ctwildlife@ct.gov

NORTHERN PIKE. A few nice reports of fish from Pachaug River, Bantam Lake, Lake Lillinonah, and the CT River. The weedlines are producing.

WALLEYE. No catches reported this week. Best bets are to try Mount Tom Pond, Saugatuck Reservoir, Squantz Pond, Batterson Park Pond, Beach Pond, Cedar Lake, West Thompson Lake, Gardner Lake, or Mashapaug Lake.

CATFISH. fishing remains solid in many of our [Catfish Management Lakes](#) and several [Community Fishing Waters](#). Try cut fish (mackerel) or live shiners to entice a cat to bite.

PANFISH are still a great bet. Perfect for family fun along the shoreline of a small pond. Check out the “panfish” map in our new application “[CT is Fishy](#)” to find a new place to fish close to you.

FALLFISH (DACE) are the largest native minnow and can reach over 15 inches (typically 8-12 inches). Fallfish provide excellent action on ultra-light tackle and fly rods. The fish are aggressive and will hit a variety of natural and artificial baits (use the same gear you would for trout). Fishing for Fallfish is a great way to spend time on a river.

Good Fallfish waters include the Willimantic River, Shetucket River, Natchaug River, Lower Farmington River (Avon-Windsor), Housatonic River (Cornwall to Kent), Scantic River (Somers to East Windsor), and Yantic River. The current [state record](#) Fallfish (2.25 pounds) was taken in 2012 by Chad Tessman.

TROUT-LAKES & PONDS – Most lakes remain poor to fair. Best bets are to hit the traditional deep cold lakes like; East Twin Lake, West Branch Reservoir, Long Pond, Crystal Lake, or Highland Lake.

TROUT- RIVERS & STREAMS. Conditions for trout fishing are fair and will improve with the forthcoming fall stocking. This past week the Salmon River, Salmon River TMA, and the Moosup River TMA were stocked. For the latest information on what has been stocked, follow our daily posts on [Facebook Page](#) or [Twitter Page](#), view our [current stocking report](#), or check out the [interactive trout stocking map](#). Flows are very fishable - see [stream flow graphic on page 3](#).

Farmington River – Fishing remains very good. The West Branch flows lower than normal are clear and should be low (currently 52 CFS at Riverton, with the Still River at 17 CFS) and morning water temperatures ranging from the mid to upper 50's °F below the dam to the mid 60's °F through New Hartford.

Hatches/patterns shifting to the fall patterns. The warm muggy afternoons have been good for “flying ants”. Other perennial favorites include *Isonychia bicolor* (#10-14, fast water, evening), Tricos (#24), Blue Wing Olives (*Drunella* sps. & *Baetis* sps.; #18, 20-24, mid-late afternoon), Cahills/Summer (*Stenonema ithaca*, #12-14, evenings), Caddis (tan #16-18, all day; green #22-26, evening; summer pupa #18-20 morning), Midges (#22-32, morning), Black Ants (#14-20, mid-day in fast water), Black Beetles (#14-18, mid-day), and Stone Hopper (#8-14, mid-day) are successful patterns. Try a “muddler minnow” to trigger that big 'bow into hitting your line.

Housatonic River – Fishing has been very good. Last week 4,000 Rainbow trout were stocked into the TMA (Cornwall). The flows are perfect for that late summer day on the river (currently 231 CFS at Falls Village and 360 CFS at Gaylordsville). Morning water temperatures are in the upper 60's.

Hatches/patterns include a good diversity of insects with just about everything happening at one point in the day or another. Patterns to try include White Zonkers, Woolly Buggers (go big- larval dobsonflies can be up to 4” in length and are a favorite food item), Muddlers, Grey or Black Ghosts (#4-10). Other insects include flying

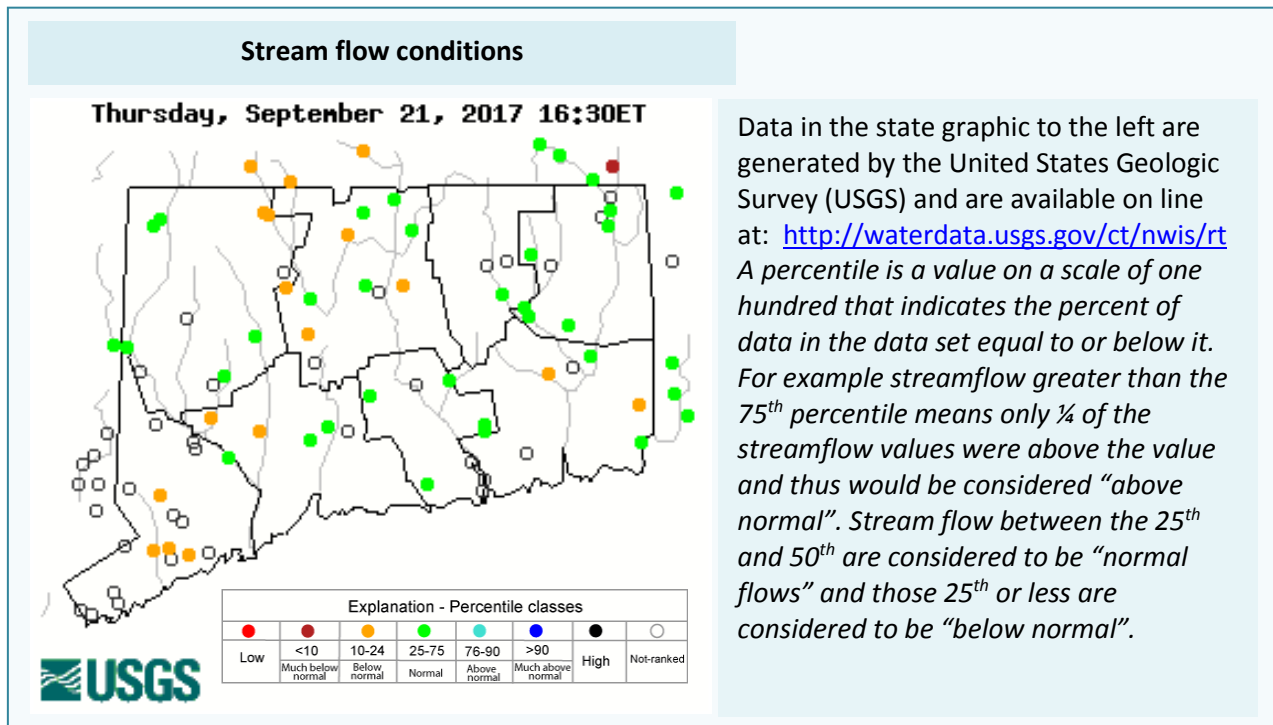
SAVE THE DATE
Connecticut Hunting & Fishing Day
Saturday, September 23, 2017.
10 am-4 pm
CABELA's, East Hartford
Get all of the details at
www.ct.gov/deep/huntfishday

ants (#14-16, mid-day, when windy/humid, September is peak month), Fall Sulfurs (#16-18), Blue Wing Olives (#18-22), Tricos (#20-22), Leadwing Coachman (#10-12 evening, September is peak month), Sulfurs duns (#16-18, below the dam due to low temperatures, morning; afternoon to early evening for spinners), Light Cahill (#14-18, early morning & evening). Golden stonefly nymphs hatch at first light and adults egg-lay after dark.

Streamer fishing and nymphing with big stoneflies is usually productive. Streamer patterns to try include White Zonkers, Woolly Buggers (#2-12), Muddlers, Lion Buggers, and Grey or Black Ghosts (#4-10). Light Cahill (#12-14, evening), Isonychia (#10-12), Sulfur (#16-18) and Black caddis (#14-18, early morning & evening). Don't forget poppers and streamers for some big trout as they head out from the thermal refuges.

CONNECTICUT RIVER

BLACK CRAPPIE action is improving in the coves up and down the river. Target the backwaters with small shiners. **SMALLMOUTH BASS** (some fish up to 4 lbs) are providing action in the river both above Hartford and downstream. **NORTHERN PIKE** fishing is reported as good in the main stem and coves. Fish have been caught from the Hartford area downstream to Chapman Pond. **LARGEMOUTH BASS** are being caught (but you have to work for them) in the Hartford to Haddam area. **CARP** are providing action in coves and in the mainstem. (Hartford to Middletown area). **BOWFIN** can be found in backwater areas with dense weeds.



LAKE & POND BATHYMETRIC MAPS

Bathymetric maps of many of Connecticut’s public access lakes and ponds can be found online at:

www.ct.gov/deep/lib/deep/fishing/general_information/lakebathymetrymaps.pdf

Both plain line maps and maps overlaying an aerial photo available.

NOTES & NOTICES:

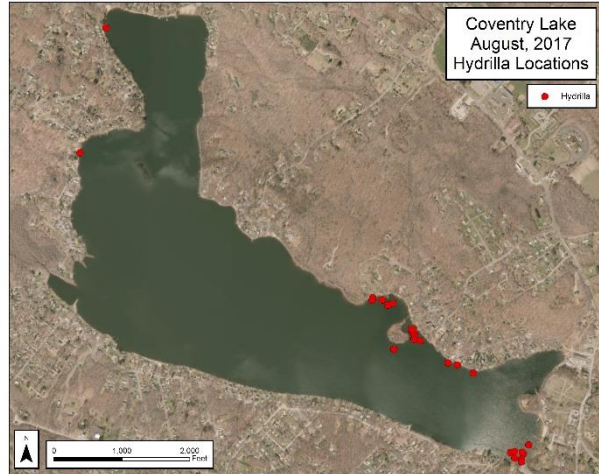
CONNECTICUT RIVER (Glastonbury to Hartford, rowing regatta). A high school rowing event (“Head of the Tomahawk”) is scheduled for **Saturday, September 23 from 7:00 am to 1:00 pm** in the Connecticut River from near the mouth of Keeney Cove up to just below the power plant. Boaters should use additional caution on the river in this area.

CONNECTICUT RIVER (invasive species alert). Hydrilla was recently found in the main stem Connecticut River Glastonbury (near Glastonbury’s Riverfront Park & Boathouse). See the Coventry Lake entry below for what river users should do to prevent spread of this invasive plant to other waterbodies.

COVENTRY LAKE (invasive species alert). Hydrilla, a very highly invasive aquatic plant, has been found growing in Coventry Lake. All lake users should take extra care to check and clean their boats (including canoes, kayaks and rowing sculls), trailers, and fishing equipment before leaving the boat launch, or leaving the lakeshore.

RAINBOW RESERVOIR (drawdown). The reservoir has refilled.

WEST HILL POND (drawdown). A 5-foot drawdown is ongoing to facilitate dam maintenance.



Coventry Lake (Wangumbaug Lake) boaters should avoid the areas noted with red dots to avoid fragmenting and spreading hydrilla.

PHOTO CONTEST: Do you have the next Angler’s Guide cover shot? Email us your high quality (high resolution) photos **by November 1** to Deep.inland.fisheries@ct.gov and include [photo contest](#) in the subject line.

CT FISHIN’ TIPS is our monthly e-newsletter dedicated to providing information, tips and pointers about fishing in Connecticut. Get CT Fishin’ Tips delivered automatically to your in box by subscribing at www.ct.gov/deep/newslettersubscription

NEW! Youth Fishing Passport [Fishing Challenge Scorecard](#): Download the new scorecard for your Youth Fishing Passport Holder on the program web page at www.ct.gov/deep/yfp. Top anglers will receive a great prize pack of fishing gear.

"Connecticut is Fishy!" a new interactive fishing resource for novice and expert alike. The link is on our main page at www.ct.gov/deep/fishing or hit it directly at <http://ctdeep.maps.arcgis.com/apps/MapJournal/index.html?appid=a17906f58b594e118555d48bf999b51c>

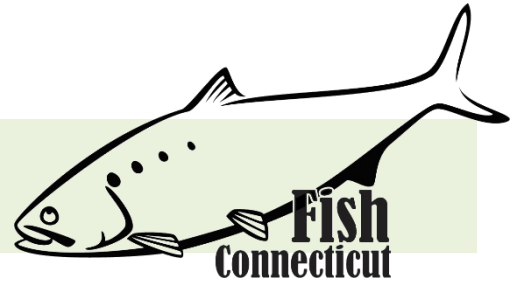
We are fortunate that within a 60 minute drive you can be fly fishing the famed Housatonic or Farmington River, catching monster pike in Bantam Lake, jumbo carp from the Connecticut River, or on the Sound fishing for tasty favorites like fluke, porgy, black sea bass, striped bass and bluefish.

This NEW interactive application has lots of great information, including maps and links, providing all you need to know about Connecticut's fisheries.

Give it a spin and let us know what you think!



MARINE FISHING REPORT



Surface water temperatures in Long Island Sound (LIS) are in the low to mid 70's °F. Check out the following web sites for more detailed water temperatures and marine boating conditions:

<http://www.mysound.uconn.edu/stationstat.html>
<http://www.ndbc.noaa.gov/>

http://marine.rutgers.edu/mrs/sat_data/?nothumbs=1
<http://www.wunderground.com/MAR/AN/330.html>

Connecticut State Boundary Line in Long Island Sound. Anglers please note: Though Connecticut has reciprocity with neighboring states (New York, Rhode Island, Maine and Massachusetts), residents of Connecticut are required to have a CT Resident Marine Waters Sport Fishing License to fish in the Marine District.

WHALES have been reported in Long Island Sound (in early July, juvenile humpback whales have been spotted on the New York side of the sound), please see check [WHALE WATCHING GUIDELINES](#).

Note: All marine mammals are protected by the Federal Marine Mammal Protection Act. Following these recommended operational guidelines helps minimize chances of harassing or injuring whales and violating Federal law. Guidelines apply to all large whales from Maine through Virginia, except North Atlantic right whales. It is illegal to approach a right whale within 500 yards (1500 feet) unless granted specific exemption or authorization.

SEA TURTLES: [See a Tangled Turtle? Call the Hotline!](#) 1-860-572-5955 ext. 107. This is the time of year when leatherback, loggerhead, green, and Kemp's ridley sea turtles return to northern waters, with many sightings around Long Island Sound.

ATLANTIC BONITO & LITTLE TUNNY fishing is very good. We have a new state record Atlantic bonito at 11 lbs 8 ozs from the Ocean Beach area. Your best bet is to bring along a pair of binoculars and watch for the birds. Last weekend a couple of False Albacore anglers did very well using a Hoggy Epoxy jigs at Hatchetts Reef. Also you cannot go wrong with using sluggos, albie snacks and deadly dicks. If you hook one of these little tuna's; hold on!!! These small tunas are cruising around from Newport, Pt. Judith, Watch Hill to Pine Island (including Fishers Island Sound), and the Race to Little Gull Island, from Bartlett Reef, **Niantic Bay, Millstone Outflow** to Black Point, New Haven, **Stratford, Milford, Middle Ground and Cockenoe Island**. Try casting metal (heavy) lures to feeding fish on the surface. A quiet approach and finding birds (gulls/terns) actively feeding is the key to a successful trip.

STRIPED BASS remains very good at night. Hook up with a charter boat and learn how to catch those "cow" bass. A 57 pound, 52 inch striped bass was caught this past week in West Haven. Striped bass holdovers and schoolies are still feeding on poppers and bunker chunks at the mouth of the **Housatonic and Norwalk Rivers**, as well as **Pennfield Reef, Calf Pasture Beach, Seaside Park and Norwalk Islands**. They are mostly hitting bait and poppers at night and during the early morning. A nice little Enhanced Shore Site with ample parking and plenty of schoolies and holdovers is **Bonds Dock in Stratford**. Don't forget to join us on CT Fish and Wildlife via

Facebook at; <https://m.facebook.com/CTFishAndWildlife> . Other striper spots include the Watch Hill reefs, Ram Island Reef in Fishers Island Sound, lower Mystic and **Thames River**, the Race, Sluiceway, **Plum Gut**, Pigeon Rip, outer **Bartlett Reef**, Black Point, the “humps’ south of **Hatchett Reef**, lower Connecticut River, Long Sand Shoal, Cornfield Point, Southwest Reef (outer), Sixmile Reef, Falkner Island area, the reefs off Branford, New Haven Harbor (breakwalls) and the upper reaches, Charles Island area, lower Housatonic River, buoys 18 and 20 off Stratford Point, Stratford Shoal/Middle Ground, Milford Point, Penfield Reef, around the Norwalk Islands, and Cable and Anchor Reef.

SUMMER FLOUNDER *season closed September 21.*

BLACK SEA BASS is excellent in the Sound. Black sea bass are still being caught on high-low rigs with squid and clams...often mixed in with scup. **Calf Pasture Beach Pier, Green Can "C" off of Stratford Shoal Lighthouse, South Benson Pier and Ash Creek, Seaside Park, Saint Mary's by the Sea and Fort Nathan Hale** have all been holding black sea bass. My recommendation to plan a trip on a [party/charter boat](#) trip to fish for the many giant-sized sea bass (4-6.5 lbs) out there. Closer to home, the rocky reefs from Niantic, to Branford (Falkner Island) have been consistent all season. A reminder to all anglers...if you are fishing in water deeper than 100', barotrauma can cause released fish to struggle to make it back to the bottom. A descending devise such as the Shelton Fish Descender can help assist the sea bass air bladder to recompress and get safely back down to the depths. See Fishsmart.org for more information.

SCUP (porgy) fishing is phenomenal. Hit your favorite rock pile and enjoy some of the best fishing you can imagine. Scup (porgy) still reign supreme in Long Island Sound and are on a feeding frenzy before the fall migration. The standard high-low rig tipped with clams and/or squid still working very well at: **Saint Mary's by the Sea, Seaside Park, South Benson Pier, Calf Pasture Beach Pier, Todd's Point, Gulf Beach Breakwall, Short Beach in Stratford, Stratford Seawall and Sherwood Island State Park**, as well as the **Norwalk Islands, Green Can "C" off Stratford Shoal Lighthouse and Pennfield Reef**. List of some very accessible shore fishing locations are: Calf Pasture beach, Jennings and Penfield beach, Seaside Park, (Milford), Bradley Point Park (West Haven), New Haven, **Harkness State Park**, Rocky Neck State Park, **Kimberley Reef (Guilford)**, Meigs Point Hammonasset State Park and **Fort Trumbull State Park**. Locate your favorite [Enhanced Shore Fishing Opportunities](#) for these hard fighting and excellent eating “Reef Slammers”. Contact your [local bait and tackle shop](#) for updated fishing information.

BLUEFISH are scattered but there are some real “alligators” to 17 pounds out there especially at these locations: **28-C, Saint Mary's by the Sea, Pennfield Reef, Gulf Beach Pier, Norwalk Islands, Sandy Point and Milford Audubon Society**. Adult bluefish have been preferring poppers over bait this week and feeding in relatively shallow water. **Cranes Reef and Saybrook Lighthouse** has been phenomenal this past week for large blues on top-water.

Snapper bluefish aka juvenile bluefish fishing is very good and I highly recommend visiting the many Enhanced Opportunity Shore Fishing sites to catch them. **Norwalk Maritime Aquarium pier, Calf Pasture Beach Pier, Pleasure Beach Family Pier, South Benson Beach Pier and Gulf Beach Pier**.

BLACKFISH (TAUTOG) *CLOSED until October 10, 2017*

STRIPED SEAROBIN fishing continues to be steady for this “hardhead fish with spines and large pectoral fins”. Also, called “**Poor-Man's Lobster**”, these fish are very common especially when bottom fishing at many of Connecticut's shore fishing sites. With fish measuring over 22 inches and “barking up a storm” (grunting noise they make when handling them). They love sandworms, squid and any live or dead bait. They are also very good to eat. There are videos on how to clean/fillet these tasty eating fish.

HICKORY SHAD fishing is fair in the Black Hall River/**Lieutenant River (out-going tide)**, Housatonic River and the lower Connecticut River (DEEP Marine Headquarters fishing pier). Fishing remains good at Fort Trumbull,

Black Hall, Clinton Harbor River systems and the lower Connecticut River (DEEP Marine Headquarters fishing pier).

WEAKFISH fishing is good in the western Sound. Weakfish have been reported from the New York state line to New Haven. The hottest spots to catch weakfish this week include Buoy 18, Sunken Island and Execution Rock. Weakfish is also surprisingly good in the central sound (Falkner Island).

NORTHERN KINGFISH fishing has been very good. Many reports this month from the western Sound including **Walnut Beach** and **Sandy Point**. **Kingfish are found along hard sand bottom and frequent shallow water. Excellent fishing for the shore angler along with being excellent eating.** If you play your cards right you might catch one of these beauties - great bragging rights.

BLUE CRAB fishing is good in lower rivers/tidal creeks and bays. Many of the large Jimmies (male crabs) are now available in the lower reaches of rivers. Incoming tide has produced better crab fishing...as the crabs migrate into the shallow water to feed. **Remember, all egg bearing females must be released. Minimum carapace length is 5 inches for a hard shell crab.** Legal gear types include scoop (dip) net, hand line, star crab trap, circular (topless) trap not exceeding 26 inches in diameter. Maryland style crab traps are prohibited. **Chicken with the skin on it (along with a long handle dip net) and a small circular crab trap is the preferred method to capture these tasty crabs.** [Blue Crab Fact Sheet](#) Angler's please also note: It is illegal to snag blue crabs.

NOTABLE CATCHES –

Species	Length (in.)	Weight (lb)	Angler
Atlantic Bonito	29.50"	11 lbs 8 oz	Mark Drummey
Blue Crab	9.1"	1 lb 2 oz	Jennifer Zuppe
Smooth Dogfish	61"	21 lbs 4 oz	Albert Zuppe
Striped Bass	50.25"	57 lbs 9 oz	Albert Zuppe

***For Current Connecticut Recreational Fishing Regulations:** Anglers should consult the 2017 Connecticut Anglers Guide which is now available at most Town Clerks Offices, DEEP offices and at tackle stores selling fishing licenses. Current regulations, electronic versions of the Angler's Guide and additional information is on the DEEP website at: www.ct.gov/deep/fishing.*

The Connecticut Department of Energy and Environmental Protection is an Affirmative Action/Equal Opportunity Employer that is committed to complying with the requirements of the Americans with Disabilities Act. Please contact us at (860) 418-5910 or deep.accommodations@ct.gov if you have a disability and need a communication aid or service; have limited proficiency in English and may need information in another language; or if you wish to file an ADA or Title VI discrimination complaint.



DEEP WEEKLY Fishing Report
Connecticut Department of
Energy & Environmental Protection
79 Elm Street, Hartford, CT 06106
www.ct.gov/deep/Fisheries